

The Kelley logo consists of the word "KELLEY" in a bold, white, sans-serif font, centered within a green inverted triangle. The background of the entire advertisement features a repeating pattern of stylized, light-colored bird-like shapes on a white background, which is partially obscured by a large green curved shape on the left and a dark green curved shape on the right.

KELLEY



KELLEY aFX[®] Dock Levelers

The KELLEY airFORCE TECHNOLOGY™ series offers a safe, simple design, easy maintenance, and few moving parts, all at an affordable price making it the first choice of warehouse operations worldwide.

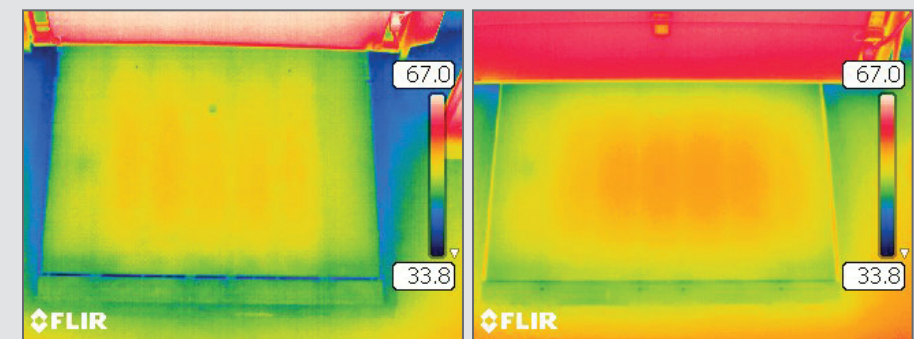
KELLEY aFX®: THE PROVEN SOLUTION

At Kelley, we saw the problems of conventional dock levelers and set out to create a superior alternative. The result: The aFX. It is innovative, cost effective and is taming harsh, ever-changing loading dock environments. aFX dock levelers improve dock performance by offering simple, reliable operation and a proven, durable structural design that leads to lower operating costs, increased productivity and safety.

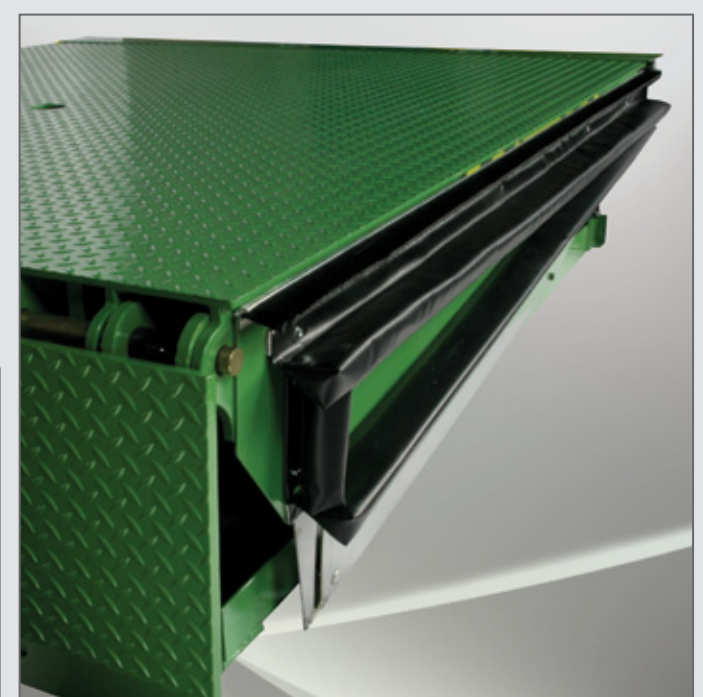
However, the increased performance and safety of the aFX leveler are just the beginning of the potential benefits to your operations. Running on standard 120V, single-phase power, the aFX requires minimal energy to operate, making it an ideal platform for Kelley's exclusive solar powered dock option, further supporting your sustainability efforts.

ENERGY GUARD® DOCK LEVELER SEALING SYSTEM:

ENERGY GUARD provides a superior perimeter seal along the sides and rear of the dock leveler to block dirt, debris, pests and most importantly, energy loss by closing off the gaps between the dock leveler and the pit walls. The innovative design closes off the gaps typically missed by a traditional weather seal or under-leveler seals attached to the front of the dock leveler. The ENERGY GUARD option can be factory-installed on all new Kelley dock levelers and available for field installation on many existing dock levelers.



BEFORE: Hot or cold air can easily transfer through perimeter gaps. **AFTER:** ENERGY GUARD effectively seals off the perimeter gaps.



THE PROBLEM OF STUMP-OUT

WHAT ARE CURRENT SOLUTIONS?

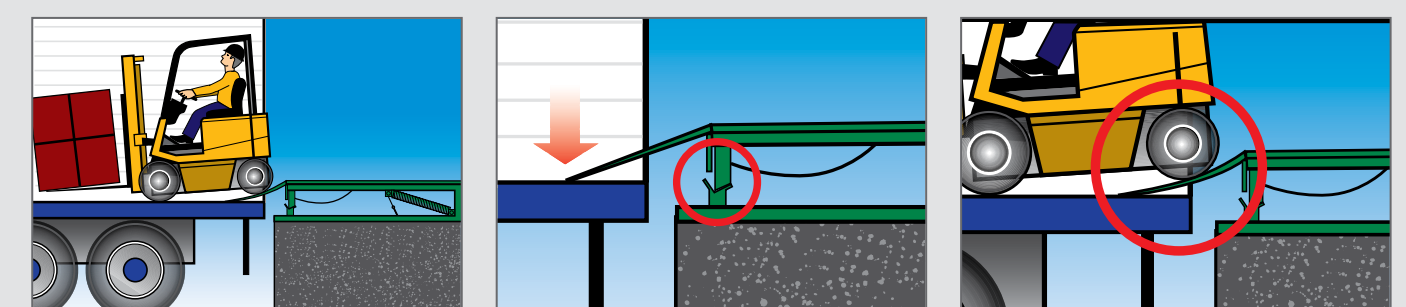
To temporarily eliminate stump-out, mechanical legs must be manually retracted with a pull-chain. Stump-out can continue if legs are not repeatedly retracted throughout loading. Hydraulic dock levelers can eliminate stump-out altogether, but this is an expensive solution and hydraulic systems present a number of new drawbacks.

AND THE PROBLEM CONTINUES...

Stump-out has become more prevalent with the rapid increase of air ride suspension trailers in the market today. These trailers can move as much as 8" every time the lift truck enters the trailer.



IT'S TIME FOR THE aFX® SOLUTION...



What is stump-out?
Stump-out occurs when a dock leveler ramp stops near dock level but the lip continues to lower with the trailer.

How does it happen?
When a trailer floor is below dock level, the mechanical support legs stop the ramp near dock level. If the operator does not manually retract the legs with a pull-chain, the lip continues to lower with the trailer.

What is the result?
The steep angle of the lip creates a potentially unsafe condition when backing out of the trailer. Damage can occur to the fork truck, dock leveler or load with lost productivity due to potential dock leveler damage and repetitive repositioning.

ESTABLISHED RELIABILITY

Since its introduction in 1995, aFX technology has established an impressive performance record that the competition can't match:

- Units Installed: 135,000+
- Fan/motor warranty: 0.004 of units installed
- Airbag warranty: 0.004 of units installed

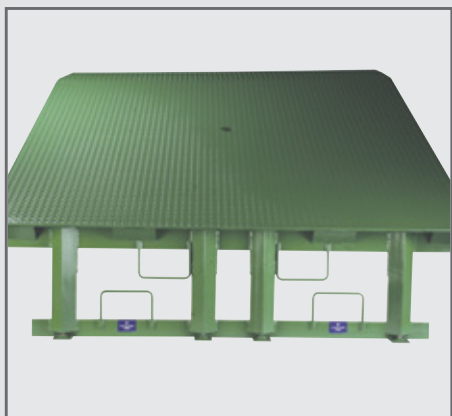


STAMP OUT STUMP-OUT:

With airDEFENSE®, our proprietary leg design and free fall protection system. Special airDefense sensor rollers glide along a reinforced cam, preventing stump-out and providing fluid, free-float motion, along with a measure of free fall protection in the event of premature trailer separation. Kelley airDefense means there's no need to install hydraulic dock levelers to obtain stump-out-free operation.



For decades, dock levelers installed in a concrete pit required an installer to place and weld steel shims under the front and rear frame of the dock leveler in order to level the device and provide long-term support. This conventional process can lead to installation errors, as installers are often working under the dock leveler in a cramped environment and may not use the correct size shim and/or weld the shim properly. The result: the dock leveler can suffer structural fatigue which may lead to expensive repair or replacement.



SafeTFrame Advantages:

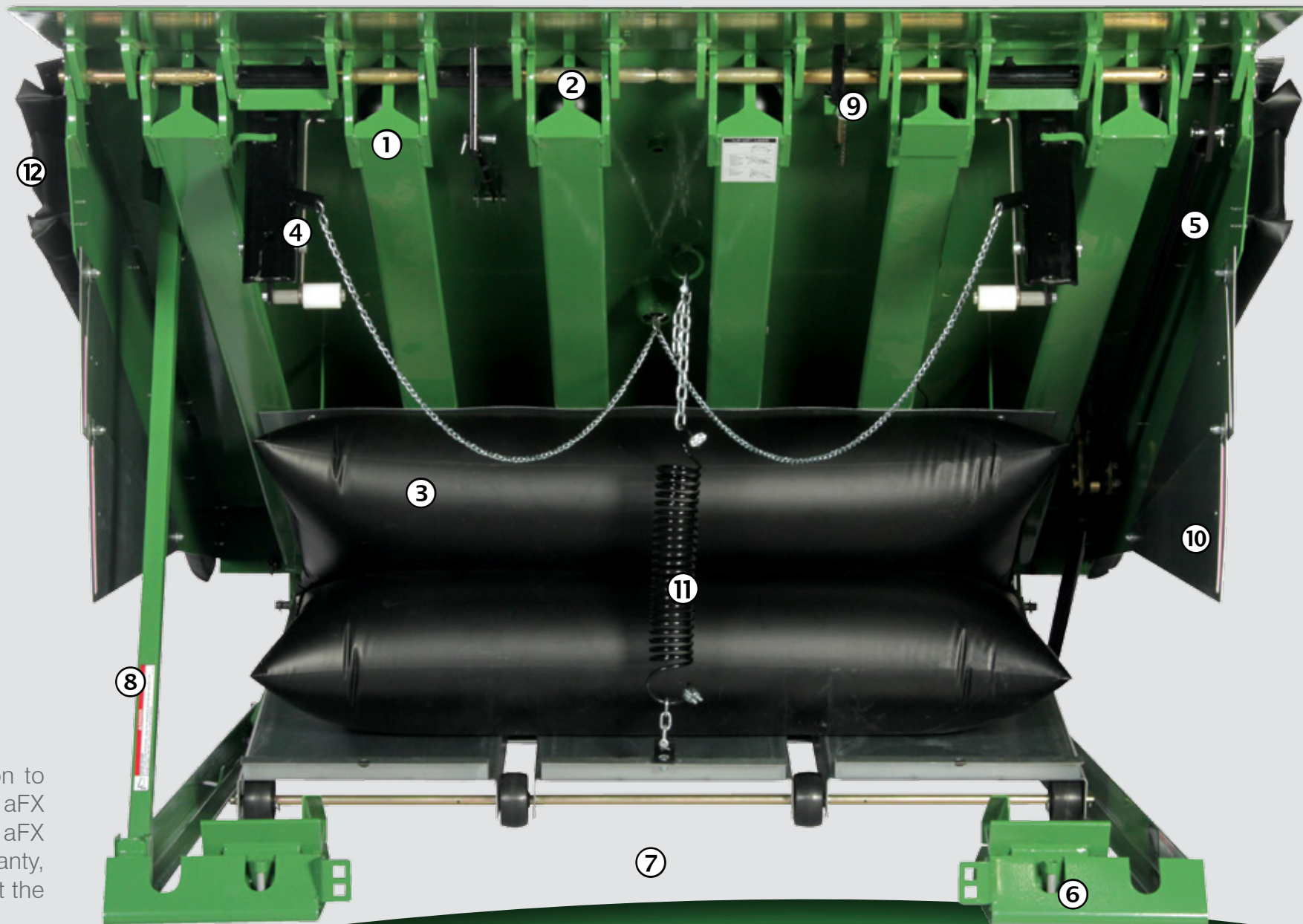
- Greater structural strength and durability
- Eliminates installation issues common with conventional dock levelers
- Ensures level transition from warehouse floor to dock leveler
- Reduces premature structural fatigue due to improperly shimmed/installed dock leveler

aFX® DOCK LEVELER

It's the original Kelley air-powered dock leveler that revolutionized the industry. In addition to delivering a safe, powered performance at a cost comparable to mechanical dock levelers, the aFX features airDefense® — preventing stump-out and providing a measure of free fall protection. The aFX is also backed by the strongest warranty in the industry, with a lifetime lip hinge assembly warranty, 10-year structural* warranty and a 5-year parts and labor warranty on the lifting system, making it the preferred choice of warehousing operations worldwide.

Strongest Warranty in the Industry

aFX includes a standard 1-year parts and labor warranty, lifetime lip hinge assembly warranty, 10-year structural* warranty, & a limited 5-year parts and labor warranty on the lifting system (bag, motor, hoses, gaskets, fittings, and seals). * Based on engineering approval of written application information.



DESIGN HIGHLIGHTS

1 Unique Lambda® Beam Design

Provides better stress distribution, resulting in less wear and fatigue, longer life and less downtime for emergency maintenance.

2 Self-Cleaning, Lug-Type Hinge

With heavy lugs welded directly to each beam and lip assembly, the Kelley lug-style hinge design is the strongest in the industry.

3 Durable, Reinforced Composite Lifting Bag

Lifting bag with RF welded, reinforced polyvinyl chloride coated polyester fibers operates without loss of performance in temperatures from -65°F to +200°F, even if punctured. The airbag cannot be over-inflated (maximum motor pressure is 4 PSI), and has been tested for chemical immersion and rodent damage.

4 Deck Support Legs with airDefense®

High efficiency 60,000 lbs.. dock level support legs are drop tested to the full rated capacity of the dock leveler. Special airDefense sensor rollers that glide along a reinforced cam, preventing stump-out and providing fluid, free-float motion, along with a measure of free fall protection in the event of premature trailer separation.

5 Smooth, Reliable Gravity Lip™ Extension

This simple mechanism uses deck weight and gravity to automatically extend the aFX Dock Leveler lip. No manual flip-lip, no hydraulic assist and no adjustments are required.

6 Exclusive SafeTFrame™

Provides superior structural support and level interface with warehouse floor.

7 Clean Pit Design

All aFX Series Dock Levelers are built with an open frame, clean pit design to provide easy access to the pit floor for cleaning and scheduled maintenance.

8 Integral Support Strut

Keeps ramp raised for routine maintenance and cleaning.

9 Integral Lip Lock

Lip Lock keeps lip raised for routine maintenance and cleaning.

10 Structural, Full-Operating-Range Toe Guards With Galvanized Sliders

For maximum safety and strength, toe guards are welded into place and have OSHA safety yellow markings per ANSI standards.

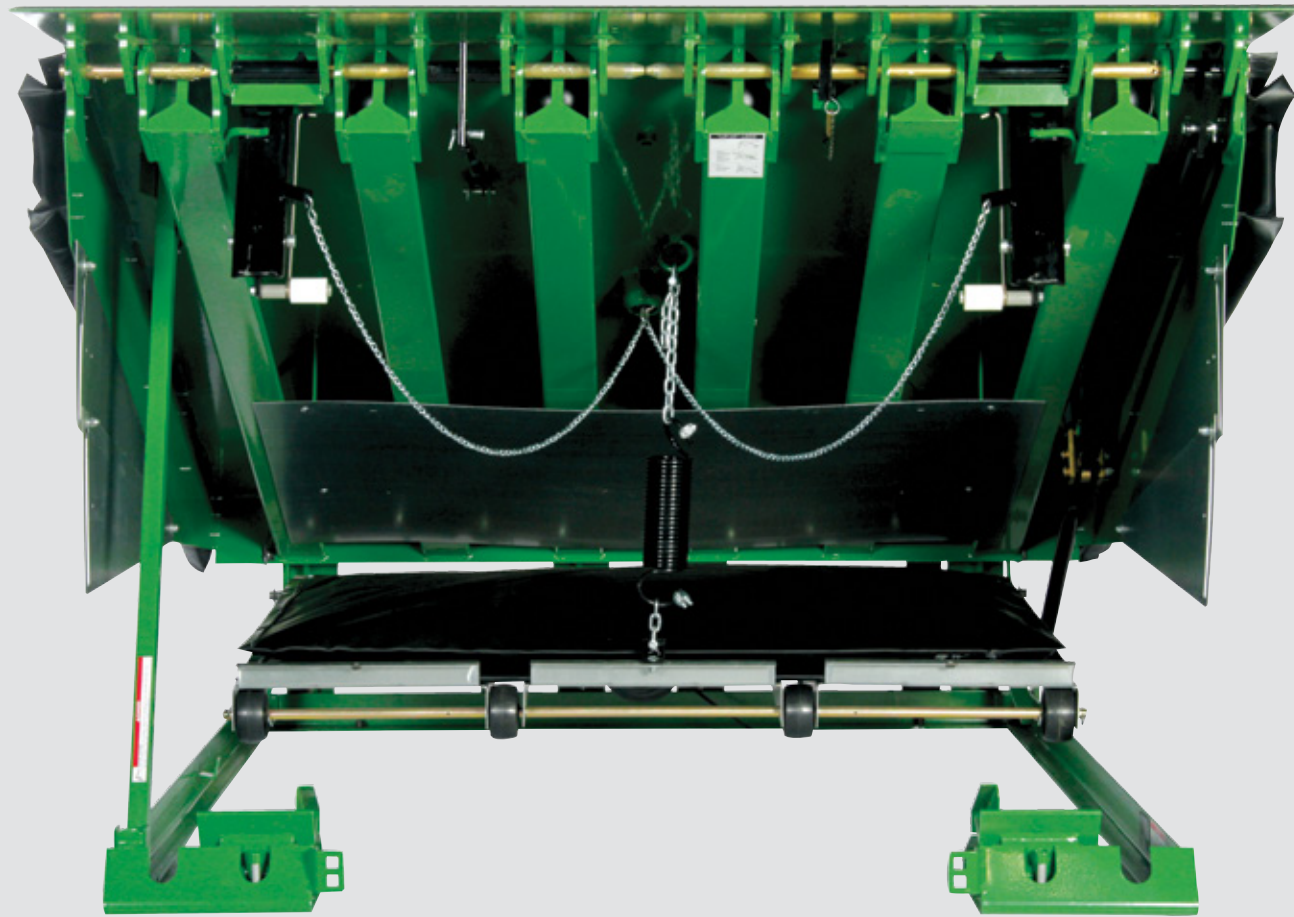
11 EZ-Clean™ Pit Kit

The patented EZ Clean Pit Kit provides total pit access for routine cleaning and scheduled maintenance. Moreover, the aFX Series are the only levelers with an activation system intended for outside-the-pit service.

12 ENERGY GUARD® Dock Leveler Sealing System Option

Provides a superior perimeter seal along the sides and rear of the dock leveler to block dirt, debris, pests and most importantly, energy loss by closing off the gaps between the dock leveler and the pit walls.

MORE aFX® FEATURES THAN EVER:



aFX-C Dock Leveler

The ideal economical solution for applications needing only the basic air-powered performance benefits. It incorporates single push-button control with the standard, Gravity-Lip™, high volume, low pressure air activation system and standard 60,000 lbs. structural semi-automatic support legs.

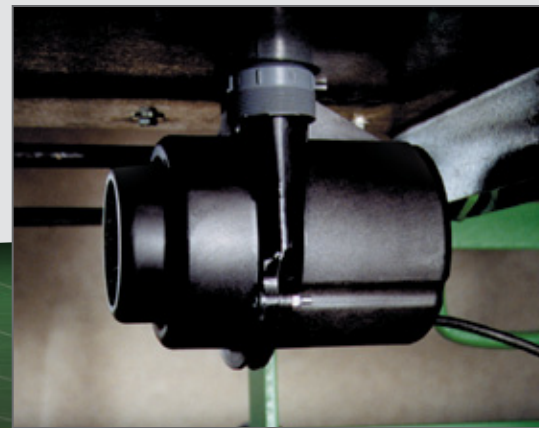
Clean Pit Design

All aFX Series Dock Levelers are built with an open frame, clean pit design to provide easy access to the pit floor. The patented EZ-Clean™ Pit Kit automatically raises the airbag pan to provide open access to the back of the pit for routine cleaning and scheduled maintenance. In addition, the aFX Series are the only dock levelers with an activation system designed for outside the pit service.

(EZ-Clean™ Pit Kit standard on aFX, optional on aFX-C)

aFX-S Dock Leveler

Kelley's premier aFX-S dock leveler provides the same proven performance, but incorporates a 5" high, full-width, constant structural steel barrier, capable of stopping a 10,000 lb. load at 4 mph. Get 100% full-time safety at dock level, as well as below-dock end-load situations and prevent accidental forklift runoff. What's more, the safety-minded aFX-S design features airDefense — to prevent stump-out and provide a measure of free fall protection.



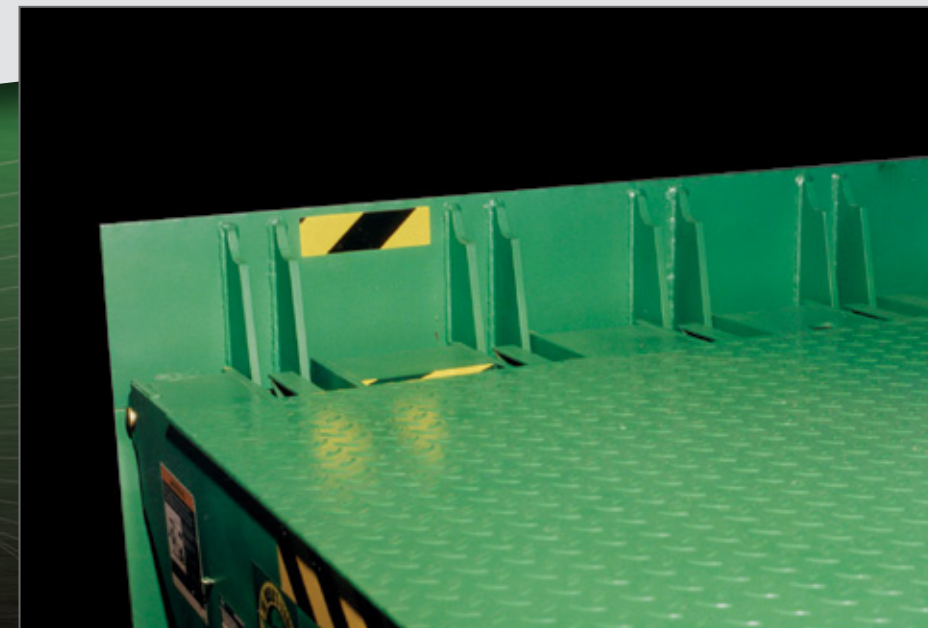
Horizontally Mounted Fan Motor Assembly

Located and protected safely under the airbag, the low pressure fan features a self-cleaning, filtered, UL approved, single speed motor. The fan motor runs on simple 120V, single-phase electricity, without hoses or clamps. Simple design to reduce service needs.



Push-Button Activation

aFX Series Dock Levelers operate on 120V power, wall-mounted, single push-button NEMA 4x non-metallic control box.



INTEGRATE YOUR KELLEY EQUIPMENT FOR SAFER, MORE EFFICIENT AND PRODUCTIVE DOCKS.

The KELLEY aFX series can be integrated with other loading dock equipment, including vehicle restraints, dock doors, inflatable seals or shelters, dock lights and security systems to improve productivity, security and environmental control. Kelley's Master Control Panel dramatically increases safety and operational efficiency by integrating and interlocking equipment controls, ensuring that equipment is always used in proper sequence.

LOADING DOCK SAFETY:

Globally, companies are opting for a safe, power-activated dock leveler like the aFX to reduce unnecessary expenses. However, while the aFX dock leveler is a great start, it's only one link in the safety chain. A tested-tough vehicle restraint like the non-impact Kelley STAR® is another crucial element for a fully protected dock.



EXPERIENCE OUR ENGINEERED SOLUTIONS FOR YOURSELF



For nearly 60 years, Kelley has been designing, manufacturing and integrating loading dock equipment. We invite you to view our full line of loading dock and warehouse products at our modern showroom in Dallas, Texas. Our Visit-in-Person (VIP) program offers a unique opportunity to gain hands-on experience with our products and interact with engineering and manufacturing personnel in a comfortable environment.

CAN'T MAKE THE TRIP TO DALLAS? Let our Mobile Showroom come to you. Our 53' completely enclosed and temperature controlled trailer features over 20 full-sized, fully-functional dock equipment demo units. Call 1-877-778-DOCK (3625) to schedule an appointment and we'll drive our loading dock solutions straight to your door.



KELLEY®

1612 Hutton Dr., Suite 140
Carrollton, TX 75006

Tel: 800.558.6960
Fax: 972.389.4766

email: sales@kelleycompany.com
www.kelleycompany.com



A continuing research program is in effect at Kelley. We reserve the right to incorporate product improvement at any time without prior notice.