



DSHL L-PAD Hood Curtain Dock Seal

Product Specifications



DESIGN HIGHLIGHTS

- Provides positive seal between internal and external environments
- Endurance-tested foam core is continuously bonded to frame surface with flexible, non-flammable adhesive
- Top of hood is tapered forward and supported with thick wall aluminum pipe
- Hood curtain splits offer load relief and higher clearance
- Highly resilient, open-celled polyurethane foam compresses easily to extend seal life
- Roll-formed galvanized steel framing reduces pressure on building wall
- L-shaped sides compress around side of trailer to create a seal providing full width trailer access
- All pads are vented for air and moisture release
- Full length yellow stripes guide
- Heavy-duty, galvanized steel mounting brackets included

APPLICATION DATA

Door width: _____ ft. _____ in.

Door height: _____ ft. _____ in.

Dock height: _____ ft. _____ in.

Bumper protection*: _____ in.

(*Includes bumper projection and any building wall/foundation offset or cantilever)

TRUCKS AND TRAILERS SERVICED

Width: _____ Max. _____ Min.

Height: _____ Max. _____ Min.

Length: _____ Max. _____ Min.

Hydraulic tailgate: ☐ Yes ☐ No Rear step section: ☐ Yes ☐ No

Tailgate/step section size: _____ in Yard jockeys: ☐ Yes ☐ No

PROJECT INFORMATION

JOB NAME _____

ADDRESS _____

GENERAL CONTRACTOR _____

DISTRIBUTOR _____

QUANTITY _____

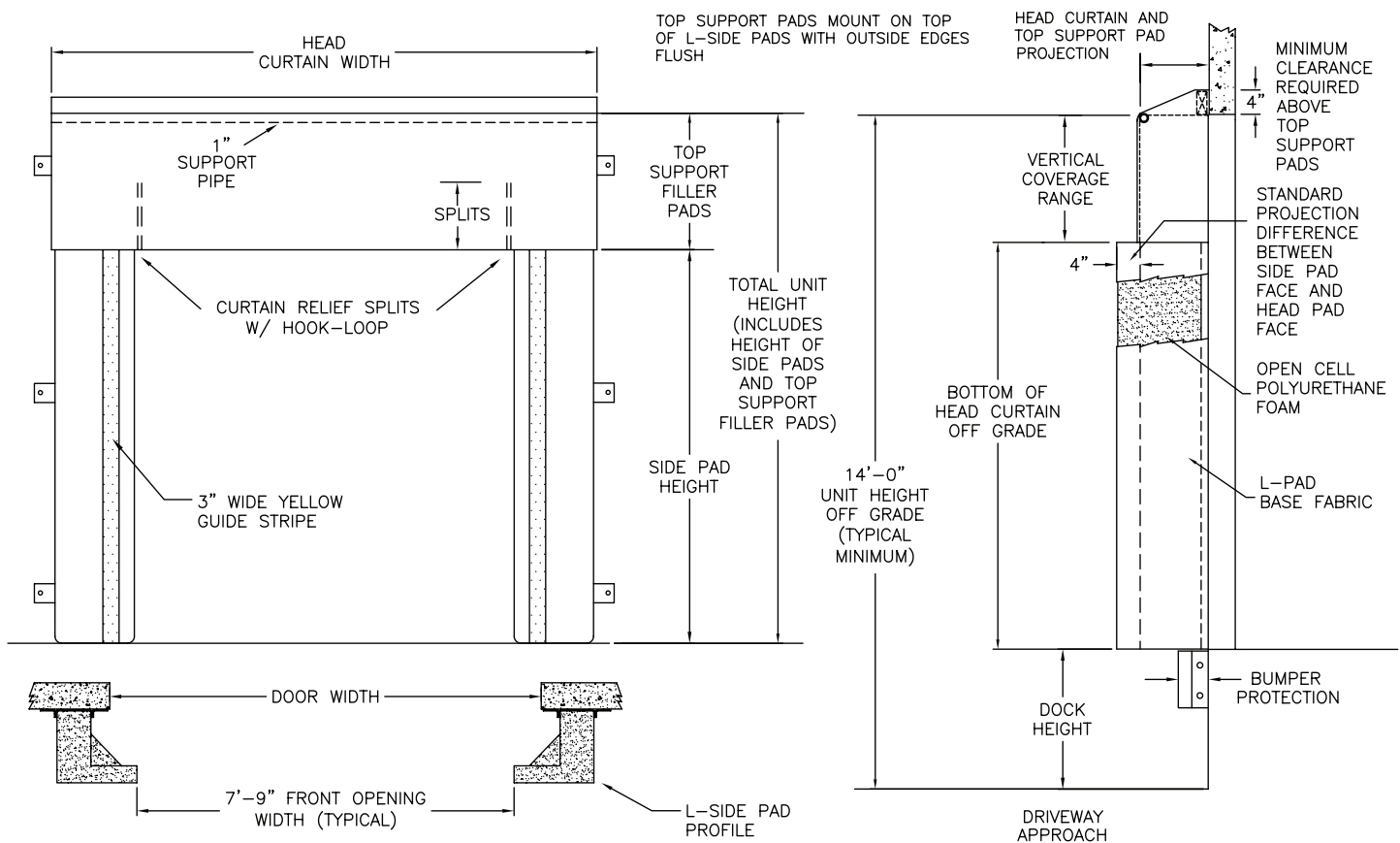
CERTIFIED FOR CONSTRUCTION

BY _____

COMPANY _____

ADDRESS _____

DATE _____



Quantity _____ Model: ☐ DSHL

Framing: Roll formed galvanized steel

Head Curtain Width: ☐ 129" for 9'6" door widths or smaller ☐ 135" for 9'7" to 10'0" door widths

Head Curtain Drop: ☐ 18" ☐ 24" ☐ 30" ☐ 36" ☐ 42" ☐ 48" ☐ _____"

Head Curtain Splits: ☐ 18" ☐ 24" ☐ 30" ☐ 36" ☐ No split

Side Pad Height: _____ (Total unit height)

Side Pad Face: ☐ 18" for 9'6" door widths or smaller ☐ 21" for 9'7" to 10'0" door widths

Base Material: ☐ 22 oz. vinyl ☐ 40 oz. vinyl ☐ 16 oz. CSM ☐ 40 oz. CSM ☐ TS-55®

Color: ☐ Black ☐ Tan ☐ Brown ☐ Blue ☐ Green

Taper: ☐ Tapered ☐ Non-Tapered

Top Projection: ☐ 16" ☐ 18" ☐ 20" ☐ 22" ☐ 24" ☐ _____"

Bottom Projection: ☐ 16" ☐ 18" ☐ 20" ☐ 22" ☐ 24" ☐ _____"

Blockout: ☐ None Top projection _____" Bottom projection _____"

Wear Face: ☐ None ☐ Hood ☐ Side pad ☐ Tip of "L" (TS-55®)

Material: ☐ 22 oz. vinyl ☐ 40 oz. vinyl ☐ 40 oz. CSM ☐ TS-55®

Color: ☐ Black ☐ Tan ☐ Brown ☐ Blue ☐ Green

Wear Pleats: ☐ None ☐ WP4 ☐ WP8 ☐ WP16 ☐ Side pads ☐ Head pad corners

Material: ☐ 22 oz. vinyl ☐ 40 oz. vinyl ☐ 40 oz. CSM ☐ TS-55®

Color: ☐ Black ☐ Tan ☐ Brown ☐ Blue ☐ Green

Options: ☐ Door numbers ☐ Flame retardant fabric & foam ☐ Flame retardant fabric only

Side Pad Mounting Brackets: ☐ None ☐ Flats & angles ☐ Angles ☐ 1 1/2" Offsets & angles

*Conversions: To convert measurements to metric, see formulas below:

Inches x 25.4 = millimeters (Example: 4" x 25.4 = 101.6 mm)

Feet x .3048 = meters (Example: 12' x .3048 = 3.66 m)



Kelley
1612 Hutton Drive, Suite 140
Carrollton, TX 75006
800.558.6960
www.kelleydocksolutions.com

4Front Engineered Solutions reserves the right to change specifications and designs without notice and without incurring obligations. 4Front Engineered Solutions products may be the subject of one or more U.S. and/or foreign, issued and/or pending, design and/or utility patents. Kelley as word and logo are registered trademarks belonging to ASSA ABLOY Entrance Systems AB or other companies controlled by the same organization. All rights reserved.

©ASSA ABLOY. All rights reserved. Part of ASSA ABLOY. Printed in USA. KPS-SEDSHL-1220