



DSS Foam Dock Seal with Head Pad

Product Specifications



DESIGN HIGHLIGHTS

- Provides a positive seal between internal and external environments. Prevents the passage of dust, insects, exhaust fumes and other airborne particulate matter while the loading dock is in use
- Roll-formed, galvanized steel framing with 5 year warranty
- Endurance tested foam core is continuously bonded to frame surface with flexible, non-flammable adhesive
- A wide selection of durable coated fabrics provide maximum durability
- Highly resilient, open-celled polyurethane foam keeps original shape and compresses easily to extend the seal life
- Side pad bottoms are tapered to avoid pinching and wear
- All pads are vented for air and moisture release
- Full length yellow stripes guide drivers to the dock
- Heavy-duty, galvanized steel mounting brackets included

APPLICATION DATA

Door width: _____ ft. _____ in.
 Door height: _____ ft. _____ in.
 Dock height: _____ ft. _____ in.

Bumper protection*: _____ in.

(*Includes bumper projection and any building wall/foundation offset or cantilever)

TRUCKS AND TRAILERS SERVICED

Width: _____ Max. _____ Min.

Height: _____ Max. _____ Min.

Length: _____ Max. _____ Min.

Hydraulic tailgate: Yes No

Rear step section: Yes No

Tailgate/step section size: _____ in

Yard jockeys: Yes No

PROJECT INFORMATION

JOB NAME _____

ADDRESS _____

GENERAL CONTRACTOR _____

DISTRIBUTOR _____

QUANTITY _____

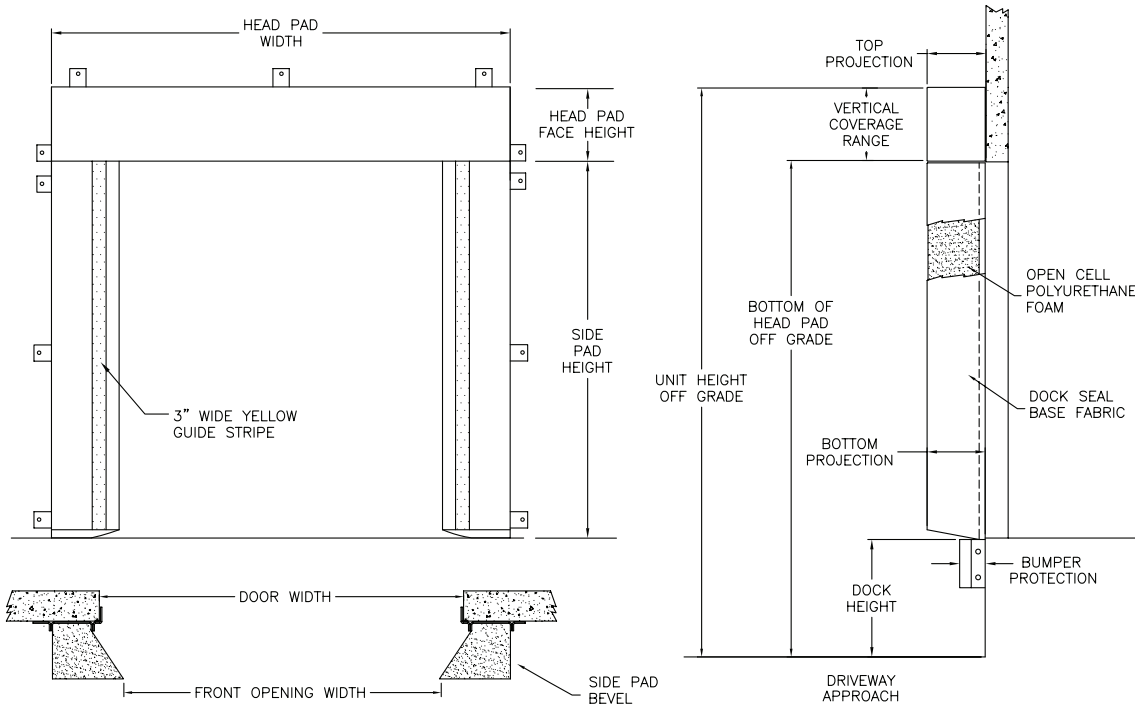
CERTIFIED FOR CONSTRUCTION

BY _____

COMPANY _____

ADDRESS _____

DATE _____



- Quantity _____ **Model:** DSS
- Head Pad Width:** _____ (Total inches)
- Head Pad Back/Face:** 12/12 18/18 24/24 12/15 12/18 Wearmaster head pad
- Drop Curtain:** None 12" 18" 24" Velcro strips Full width
- Side Pad Height:** _____ (Total inches)
- Side Pad Back/Face:** 12/12 6/10 8/12 10/12 10/15 8/15 12/15 10/18 6/14
- Base Material:** 22 oz. vinyl 40 oz. vinyl 16 oz. CSM 40 oz. CSM TS-55®
- Color:** Black Tan Brown Blue Green
- Taper:** Tapered Non-Tapered
- Top Projection:** 8" 10" 12" 14" 16" 18" 20" 22" 24"
- Bottom Projection:** 8" 10" 12" 14" 16" 18" 20" 22" 24"
- Bottom Flaps:** None 3" 6" Inside Inside & front All 3 sides
- Blockout:** None Top projection _____" Bottom projection _____"
- Wear Pleats:** None WP4 WP8 WP16 Side pads Head pad corners
- Material:** 22 oz. vinyl 40 oz. vinyl 40 oz. CSM TS-55®
- Color:** Black Tan Brown Blue Green
- Wear Face:** None Head pad Side pad
- Material:** 22 oz. vinyl 40 oz. vinyl 40 oz. CSM TS-55®
- Color:** Black Tan Brown Blue Green
- Reinforced Inside Face:** Standard Side pad full height
- Material:** 22 oz. vinyl 40 oz. vinyl 40 oz. CSM TS-55®
- Color:** Black Tan Brown Blue Green
- Options:** Door numbers Flame retardant fabric & foam Flame retardant fabric only Flame retardant foam only
- Side Pad Mounting Brackets:** None Flats & angles Angles 1 1/2" Offsets & Angles



Kelley
 1612 Hutton Drive, Suite 140
 Carrollton, TX 75006
 800.558.6960
 www.kelleydockolutions.com

4Front Engineered Solutions reserves the right to change specifications and designs without notice and without incurring obligations. 4Front Engineered Solutions products may be the subject of one or more U.S. and/or foreign, issued and/or pending, design and/or utility patents. Kelley as word and logo are registered trademarks belonging to ASSA ABLÖY Entrance Systems AB or other companies controlled by the same organization. All rights reserved.