



DSSL L-PAD Standard Dock Seal

Product Specifications



DESIGN HIGHLIGHTS

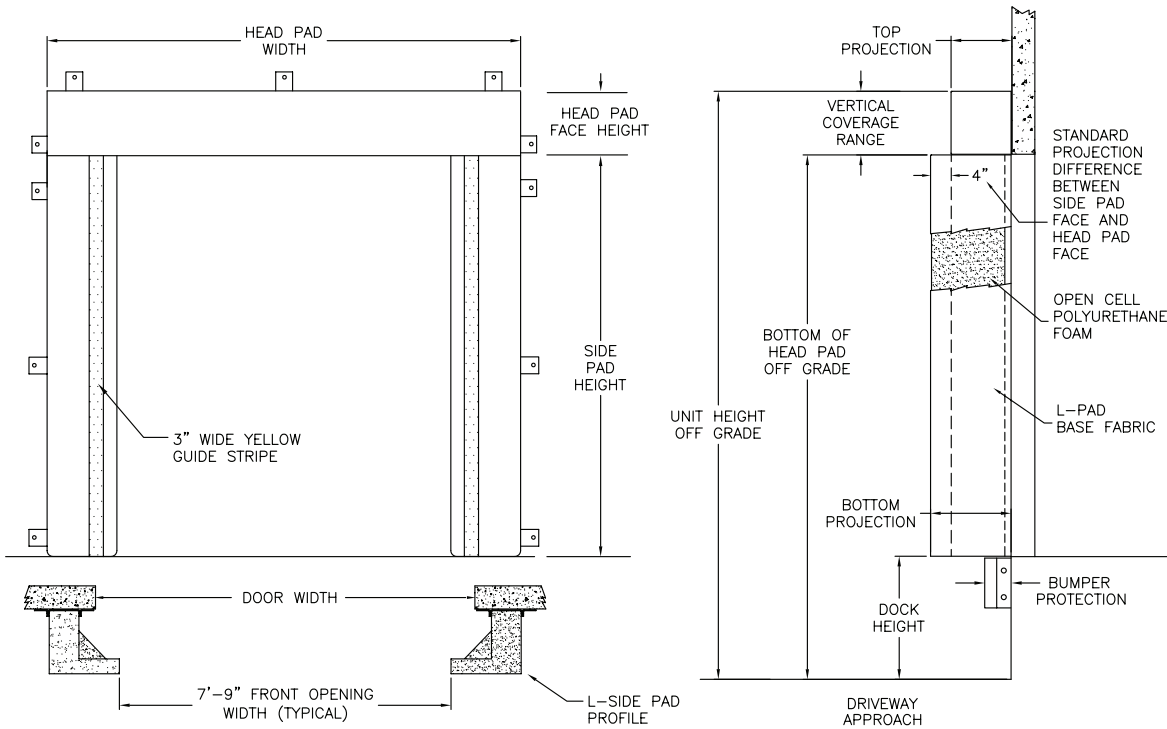
- L-shaped sides compress around side of trailer to create a seal providing full width trailer access
- Provides positive seal between internal and external environments
- Endurance-tested foam core is continuously bonded to frame surface with flexible, non-flammable adhesive
- Wide selection of coated fabrics provide maximum durability
- Highly resilient, open-celled polyurethane foam compresses easily to extend seal life
- Roll-formed galvanized steel framing reduces pressure on building wall
- All pads are vented for air and moisture release
- Full length yellow stripes guide
- Heavy-duty, galvanized steel mounting brackets included

PROJECT INFORMATION

JOB NAME _____
ADDRESS _____
GENERAL CONTRACTOR _____
DISTRIBUTOR _____
QUANTITY _____

CERTIFIED FOR CONSTRUCTION

BY _____
COMPANY _____
ADDRESS _____
DATE _____



Quantity _____

Framing: Roll-formed galvanized steel

Head Pad Width: 129" for 9'3" door widths or smaller 135" for 9'4" to 10'0" door widths

Head Pad Bevel: 12/12 18/18 24/24 12/15 12/18 Wearmaster head pad

Drop Curtain: None 12" Hook-Loop

Side Pad Height: _____ (Total unit height)

Side Pad Face 18" for 9'3" door widths or smaller 21" for 9'4" to 10'0" door widths

Base Material 22 oz. vinyl 40 oz. vinyl 16 oz. CSM 40 oz. CSM TS-55®

Color: Black Tan Brown Blue Green

Taper: Tapered Non-Tapered

Top Projection: 16" 18" 20" 22" 24" _____"

Bottom Projection: 16" 18" 20" 22" 24" _____"

Blockout: None Top projection _____" Bottom projection _____"

Wear Surface: None Wear face Side pad Head pad

Material: 22 oz. vinyl 40 oz. vinyl 40 oz. CSM TS-55®

Color: Black Tan Brown Blue Green

Wear Pleats: None WP4 WP8 WP16 Side pads Head pad corners

Material: 22 oz. vinyl 40 oz. vinyl 40 oz. CSM TS-55®

Color: Black Tan Brown Blue Green

Options: Door numbers Flame retardant fabric & foam Flame retardant fabric only

Side Pad Mounting Brackets: None Flats & angles Angles 1 1/2" Offsets & angles

*Conversions: To convert measurements to metric, see formulas below:

Inches x 25.4 = millimeters (Example: 4" x 25.4 = 101.6 mm)

Feet x .3048 = meters (Example: 12' x .3048 = 3.66 m)



Kelley

1612 Hutton Drive, Suite 140

Carrollton, TX 75006

800.558.6960

www.kelleydockolutions.com

4Front Engineered Solutions reserves the right to change specifications and designs without notice and without incurring obligations. 4Front Engineered Solutions products may be the subject of one or more U.S. and/or foreign, issued and/or pending, design and/or utility patents. Kelley as word and logo are registered trademarks belonging to ASSA ABLÖY Entrance Systems AB or other companies controlled by the same organization. All rights reserved.

©ASSA ABLÖY. All rights reserved. Part of ASSA ABLÖY. Printed in USA. KPS-SEDSL-1220