



ARMORGUARD™ DOCK SEAL

WITH HEAD CURTAIN MODEL ADS-HC

DOCK SEAL SPECIFICATIONS



ENTRE/MATIC

Product Summary

The Kelley ArmorGuard Model ADS-HC Head Curtain Dock Seal is designed to take on the most rugged loading dock environments. The exclusive SHARC fabric provides superior abrasion resistance against air ride suspension trailers, intermodal trailers, sharp edges and yard spotters.

Design Highlights

- Exclusive SHARC™ (Super High Abrasion Resistant Compound) fabric provides up to 10 times the abrasion resistance of competitive fabrics tested
- Exclusive EFC (Encapsulated Foam Chambers) Head Curtain with 1" x 3" chambers provides superior sealing on trailer top, compared to standard head curtains
- Integrated pull rope system allows full adjustability to varying trailer heights.
- Exclusive heat-sealed, full length, yellow guide stripes
- Exclusive roll-formed, galvanized steel framing
- Endurance-tested foam core is continuously bonded to frame surface with flexible, non flammable adhesive
- Top of hood is tapered forward and securely fastened to building wall
- Fiberglass stays add stiffness to hood top to prevent sagging
- Hood curtain splits offer load relief and higher clearance
- Highly resilient, open-celled polyurethane foam keeps original shape and compresses easily to extend seal life
- Side pad bottoms are tapered to avoid pinching and wear
- All pads are vented for air and moisture release



Project Information

Job Name _____
 Address _____
 General Contractor _____
 Distributor _____
 Model _____ Quantity _____

Certified For Construction

By _____
 Company _____
 Address _____
 Date _____

Entrematic reserves the right to change specifications and designs without notice and without incurring obligations. Entrematic products may be the subject of one or more U.S. and/or foreign, issued and/or pending, design and/or utility patents. Entrematic as word and logo are registered trademarks belonging to Entrematic Group AB or other companies controlled by the same organization. All rights reserved.

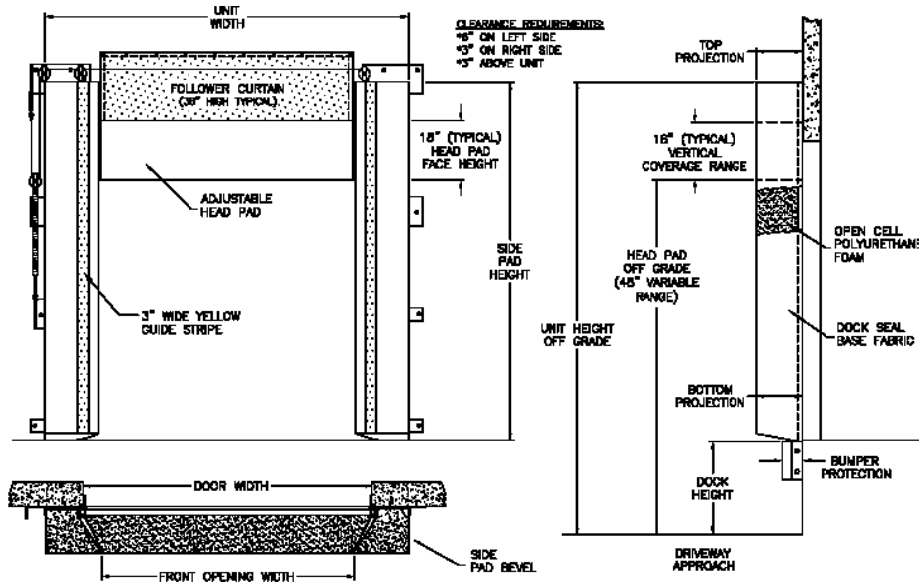
1612 Hutton Drive, Suite 140 • Carrollton, TX 75006, USA • Tel: 800-558-6960 • Fax: 972-389-4766 • Email: kelley@entrematic.com • www.kelleyentrematic.com

©Entrematic Group AB 2015. All Rights Reserved.

ARMORGUARD™ DOCK SEAL

WITH HEAD CURTAIN MODEL ADS-HC

DOCK SEAL SPECIFICATIONS



APPLICATION DATA

Door Width: _____ ft. _____ in.
 Door Height: _____ ft. _____ in.
 Dock Height: _____ ft. _____ in.
 Bumper Protection*: _____ in.
 (*Includes bumper projection and any building wall/foundation offset or cantilever)

TRUCKS AND TRAILERS SERVICED

Width: _____ Max. _____ Min.
 Height: _____ Max. _____ Min.
 Length: _____ Max. _____ Min.
 Hydraulic Tailgate: Yes No
 Rear Step Section: Yes No
 Tailgate/Step Section Size: In.
 Yard Jockeys: Yes No

QUANTITY _____

Drop Curtain None 12" 18" 24" Velcro Strips Full Width

Side Pad Height _____ (Total Inches)

Side Pad Back/Face 12/12 6/10 8/12 10/12 10/15 8/15 12/15 10/18 6/14

Base Material 22 oz. Black Vinyl Standard

Taper Tapered Non-Tapered

Top Projection 8" 10" 12" 14" 16" 18" 20" 22" 24"

Bottom Projection 8" 10" 12" 14" 16" 18" 20" 22" 24"

Bottom Flaps 3" Inside Standard

Blockout None Top Projection _____" Bottom Projection _____"

Wear Face Full Height Side Pad & Full Width Head Pad with SHARC Fabric Standard, Black

Reinforced Inside Face Full Height Side Pad with SHARC Fabric Standard, Black

Options Door Numbers

Side Pad Mounting Brackets None Flats & Angles Angles 1 1/2" Offset Flats & Angles

*Conversions: To convert measurements to metric, see formulas below:

Inches x 25.4 = millimeters (Example: 4" x 25.4 = 101.6 mm)

Feet x .3048 = meters (Example: 12' x .3048 = 3.66 m)