



TS Series Rigid Frame Dock Shelter

Product Specifications



DESIGN HIGHLIGHTS

- Heavy-duty frame available in roll formed galvanized steel (includes five year warranty) or 1 1/4" square steel
- Frames covered with translucent white fiberglass to transmit natural light into the loading area
- Raked header permits weather drainage (flat header is used when shelter is protected by a hood or canopy)
- Foam weather strip provides a seal on the top, front edge of the shelter frame, under aluminum trim angle
- Fiberglass stays add stiffness to shelter face curtains
- Wind straps on head curtain keep the head curtain from being blown out of position when the shelter is not in use
- Four overlapping wear pleats per side absorb the impact from sharp trailer corners
- Closed cell neoprene forms a wiper seal on the sides and top of trailers
- Wear panels with guide stripes provide drivers with a visual reference to the dock
- Tapered draft pads (8" to 2") located behind the side curtains help prevent air flow from lower corners of the shelter. Permanent "NO STEP" labels are included for safety
- Heavy-duty steel supports provide support and protect each side frame

APPLICATION DATA

Door width: _____ ft. _____ in.
 Door height: _____ ft. _____ in.
 Dock height: _____ ft. _____ in.

Bumper protection*: _____ in.

(*Includes bumper projection and any building wall/foundation offset or cantilever)

TRUCKS AND TRAILERS SERVICED

Width: _____ Max. _____ Min.

Height: _____ Max. _____ Min.

Length: _____ Max. _____ Min.

Hydraulic tailgate: Yes No

Rear step section: Yes No

Tailgate/step section size: _____ in

Yard jockeys: Yes No

PROJECT INFORMATION

JOB NAME _____

ADDRESS _____

GENERAL CONTRACTOR _____

DISTRIBUTOR _____

QUANTITY _____

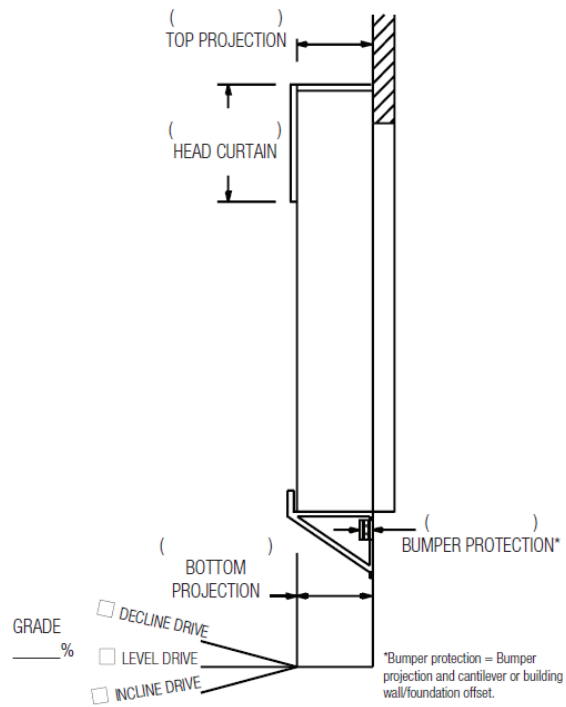
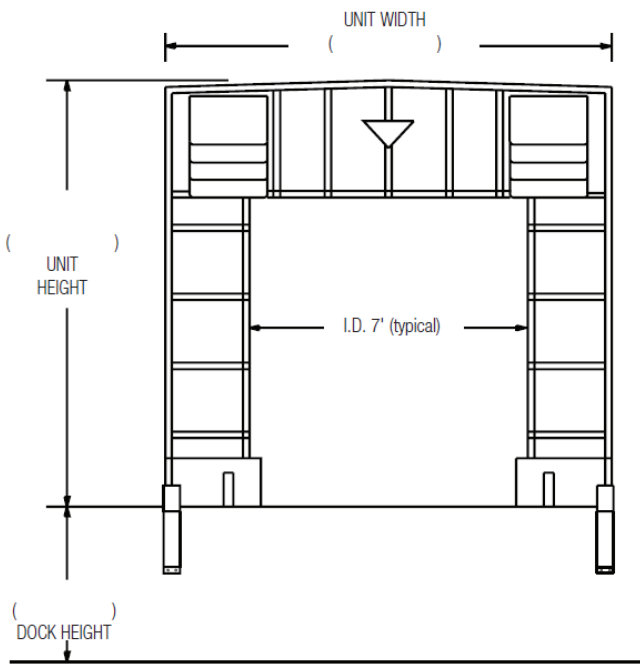
CERTIFIED FOR CONSTRUCTION

BY _____

COMPANY _____

ADDRESS _____

DATE _____



Quantity _____ Model: TS-1000

Drive/Approach: Level Incline Decline _____ % grade

Frame: Roll-formed galvanized steel 1 1/4" Steel tube

Building Wall Construction: Metal Other

Total Unit Width: _____" Total Unit Height: _____"

Material: 22 oz. vinyl 40 oz. vinyl 40 oz. CSM TS-55®

Color: Black Tan Brown Blue Green

Head Curtain Drop: 30" 36" 42" 48" 54" _____"

Head Member Style: Raked Flat Single steel tube

Taper: Tapered Non-Tapered

Top Projection: 24" 27" 30" 33" 36" 39" 42" 45" 48" 51" 54"

Bottom Projection: 24" 30" 36" 42" 48" (For projections over 48" consult factory)

Steel Supports: 30" 36" 42" 48" 54"

Steel Support Extensions: None _____" 6" 12" (Specify front channel or back extension)

Draft Pads: None 24" 30" 36" 42" 48" 54"

Options: None Door numbers Full length guide stripes Pull rope assembly

*Conversions: To convert measurements to metric, see formulas below:

Inches x 25.4 = millimeters [Example: 4" x 25.4 = 101.6 mm]

Feet x .3048 = meters [Example: 12' x .3048 = 3.66 m]



Kelley
 1612 Hutton Drive, Suite 140
 Carrollton, TX 75006
 800.558.6960
 www.kelleydockolutions.com

4Front Engineered Solutions reserves the right to change specifications and designs without notice and without incurring obligations. 4Front Engineered Solutions products may be the subject of one or more U.S. and/or foreign, issued and/or pending, design and/or utility patents. Kelley as word and logo are registered trademarks belonging to ASSA ABLLOY Entrance Systems AB or other companies controlled by the same organization. All rights reserved.

©ASSA ABLLOY. All rights reserved. Part of ASSA ABLLOY. Printed in USA. KPS-SHRF-1220