



Inflatable Rail Shelter

Product Specifications



DESIGN HIGHLIGHTS

- Top, side and optional bottom air chambers constructed from durable 10 oz./sq. yd. vinyl-coated fabric
- Provides excellent sealing for a wide variety of rail cars and rail applications
- Conforms to irregularities present on the side of some rail cars
- Inflated by a high volume, low pressure motor
- Unit retraction assisted by upward biased track-trolley support system
- Can be sized to accommodate a variety of rail ramp configurations

AVAILABLE DATA

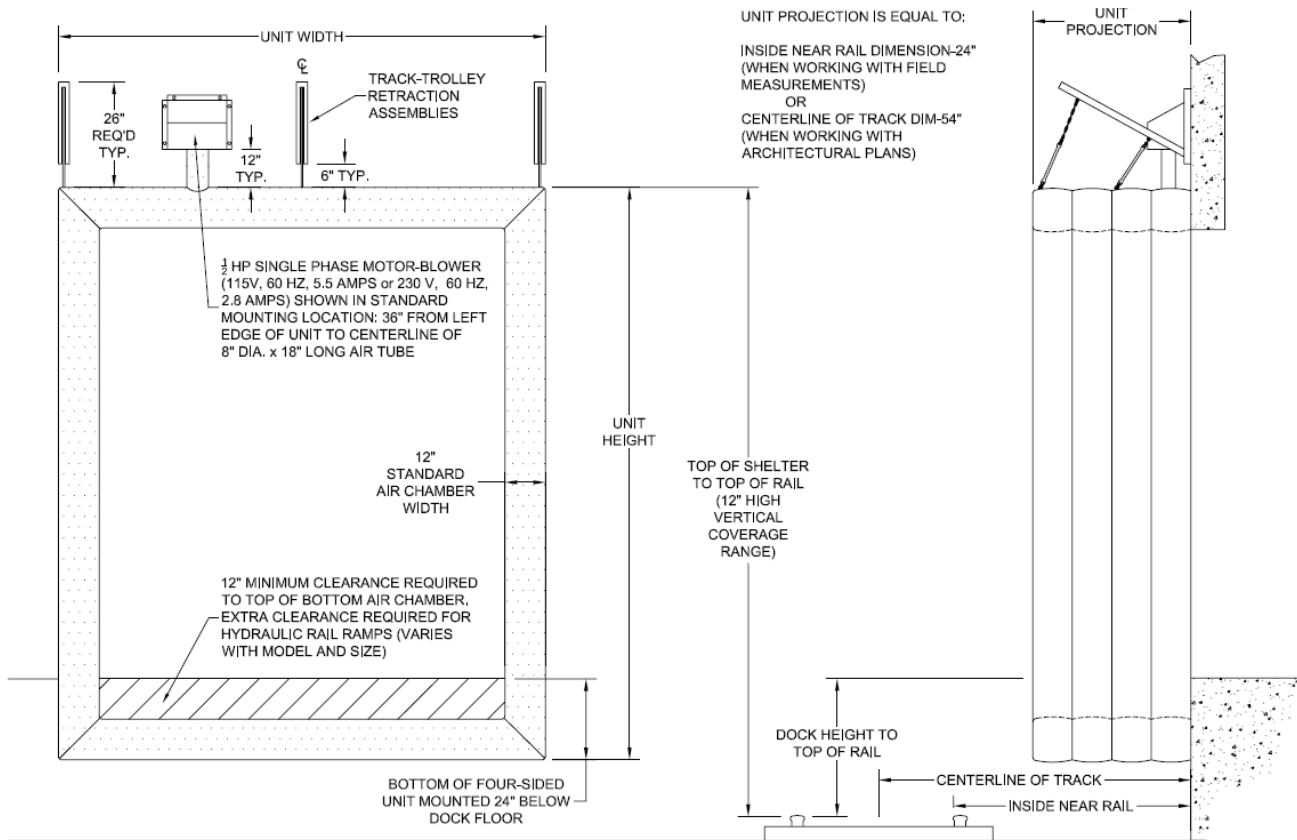
Door width: _____ ft. _____ in.
 Door height: _____ ft. _____ in.
 Dock height off top of rail: _____ ft. _____ in.
 Dock to inside near rail: _____ in. (when using field measurements)
 Dock to centerline of track: _____ in. (when using architectural plans)
 Quantity _____

PROJECT INFORMATION

JOB NAME _____
 ADDRESS _____
 GENERAL CONTRACTOR _____
 DISTRIBUTOR _____
 QUANTITY _____

CERTIFIED FOR CONSTRUCTION

BY _____
 COMPANY _____
 ADDRESS _____
 DATE _____



Please check box from each category

Complete unit Parts only (Indicate parts required. For replacement air bag, specify air inlet tube location.)

Model: KI-310-3 (3-Sided cover and frame) KI-310-4 (4-Sided cover and frame)

(KI-310 4-sided unit: size so that bottom can be mounted 24" below dock floor while maintaining top coverage range.)

Standard Frame: 2" X 12" Pressure treated wood framing

Motor/Blower: 1/2 HP, 115V, 50/60 Hz, 5.5 Amps (Switch w/pilot light included)

(Motor can be wired for 220V, 1Ph, 50/60 Hz, 2.8 Amps)

Standard single motor/blower

Optional two motor/blowers (Required when total volume of shelter exceeds 275 cubic feet.)

None

Air Inlet Tube Location: Standard top left Center Top right Specify

Unit Width: 12'-0" 13'-0" 14'-0" 15'-0" 16'-0" 17'-0" 18'-0" _____"

(Add 24" to door width to determine unit width, minimum width is 12'-0")

Unit Height: 12'-0" 13'-0" 14'-0" 15'-0" 16'-0" _____"

(Standard minimum unit height for 4-sided unit is 13'-0")

Projection: 48" 54" 60" 66" 72" 78" 84" _____"

Air Bag Fabric/Color: Black 10 oz. vinyl

Optional Head Curt Drop: 48" 54" 60" 66" 72" 78" 84" _____"

*Conversions: To convert measurements to metric, see formulas below:

Inches x 25.4 = millimeters [Example: 4" x 25.4 = 101.6 mm]

Feet x .3048 = meters [Example: 12' x .3048 = 3.66 m]



Kelley
 1612 Hutton Drive, Suite 140
 Carrollton, TX 75006
 800.558.6960
 www.kelleydockolutions.com

4Front Engineered Solutions reserves the right to change specifications and designs without notice and without incurring obligations. 4Front Engineered Solutions products may be the subject of one or more U.S. and/or foreign, issued and/or pending, design and/or utility patents. Kelley as word and logo are registered trademarks belonging to ASSA ABLÖY Entrance Systems AB or other companies controlled by the same organization. All rights reserved.

©ASSA ABLÖY. All rights reserved. Part of ASSA ABLÖY. Printed in USA. KPS-SRAI-1220