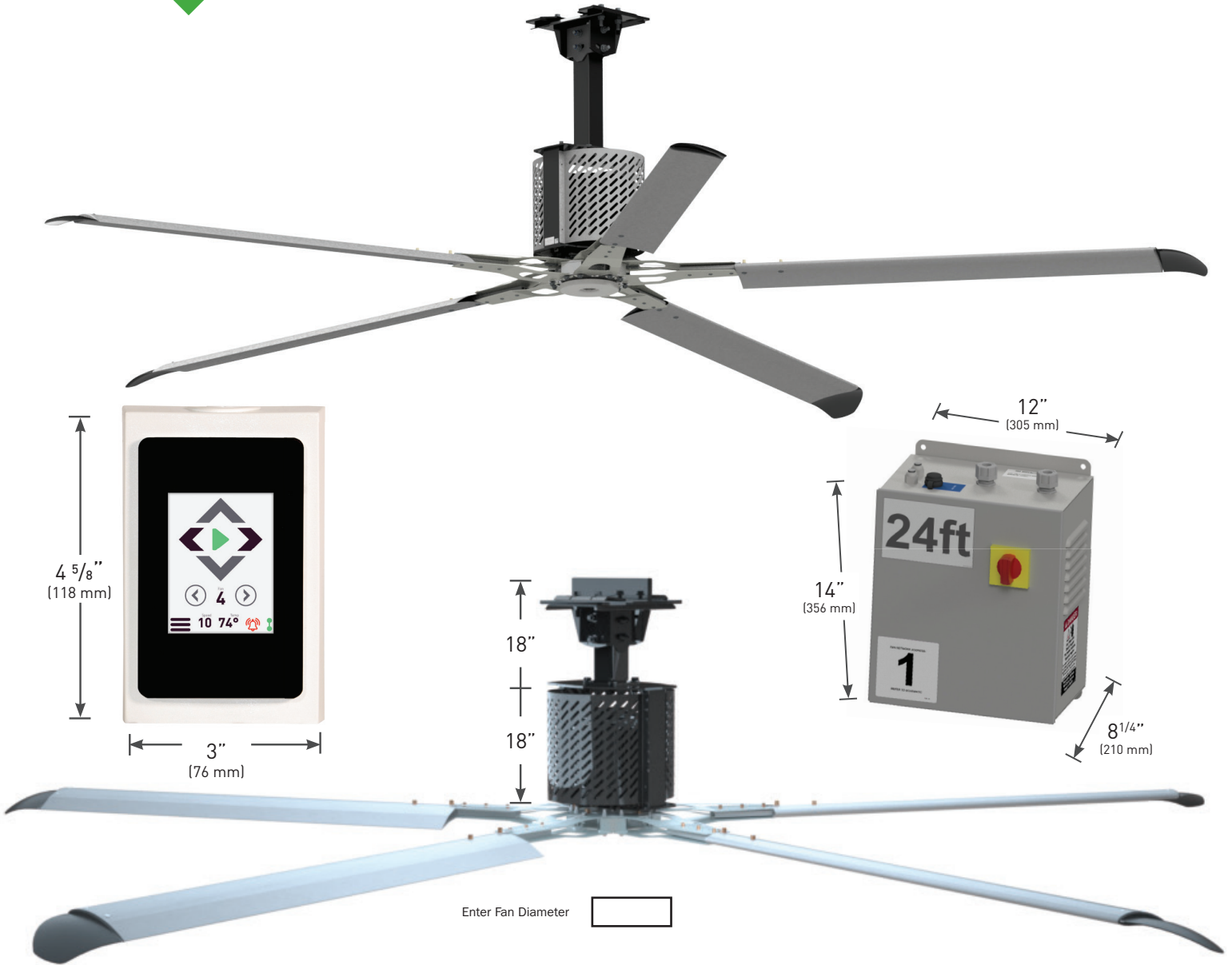


**KELLEY®**

# DIRECT DRIVE INDUSTRIAL HVLS FAN

## PRODUCT SPECIFICATIONS



|                | Sizing Chart                       |                                    |                                    |                                    |                                    |                                    |                                    |
|----------------|------------------------------------|------------------------------------|------------------------------------|------------------------------------|------------------------------------|------------------------------------|------------------------------------|
|                | 6022500, 6022504, 6022508, 6022512 | 6022501, 6022505, 6022509, 6022513 | 6022520, 6022542, 6022545, 6022517 | 6022502, 6022506, 6022510, 6022514 | 6022503, 6022507, 6022511, 6022515 | 6022540, 6022543, 6022546, 6022518 | 6022541, 6022544, 6022547, 6022519 |
| <b>Voltage</b> | 120V/1PH/50 60HZ                   | 230V/1PH/50 60HZ                   | 230V/1PH/50 60HZ                   | 230V/3PH/50 60HZ                   | 480V/3PH/50 60HZ                   | 230V/3PH/50 60HZ                   | 460V/3PH/50 60HZ                   |
| <b>FLA</b>     | 19.3A                              | 12.6A                              | 13.0A                              | 7.3A                               | 3.8A                               | 7.5A                               | 3.4A                               |
| <b>Fuse</b>    | KTKR20                             | KTKR15                             | KTKR15                             | KTKR10                             | KTKR5                              | KTKR10                             | KTKR5                              |
| <b>Motor</b>   | 0.8kW/6A @ 230V/60HZ               | 0.8kW/6A @ 230V/60HZ               | 1.2kW/5.6A @ 230V/60HZ             | 0.8kW/6A @ 230V/60HZ               | 0.8kW/3A @ 460V/60HZ               | 1.2kW/5.6A @ 230V/60HZ             | 1.2kW/2.8A @ 460V/60HZ             |
| <b>VFD</b>     | 100-115V 1PH<br>230V 3PH / 4.2A    | 200-240V 1PH<br>230V 3PH / 10A     | 200-240V 1PH<br>230V 3PH / 10A     | 200-240V 3PH<br>230V 3PH / 10A     | 380 480V/3PH<br>480V 3PH / 5A      | 200-240V 3PH<br>230V 3PH / 10A     | 380 480V/3PH<br>480V 3PH / 5A      |
| <b>O/L</b>     | 6.0 A                              | 6.0 A                              | 5.6 A                              | 6.0 A                              | 6.0 A                              | 5.6A                               | 5.6 A                              |

## Project Information

Job Name \_\_\_\_\_

Address \_\_\_\_\_

General Contractor \_\_\_\_\_

Distributor \_\_\_\_\_

Model \_\_\_\_\_ Quantity \_\_\_\_\_ Voltage/Phase \_\_\_\_\_

## Certified For Construction

By \_\_\_\_\_

Company \_\_\_\_\_

Address \_\_\_\_\_

Date \_\_\_\_\_



# DIRECT DRIVE INDUSTRIAL HVLS FAN

## PRODUCT SPECIFICATIONS

### Control Options

- ☐ Wired Touch Screen
- ☐ Wired Touch Screen with Temperature Control
- ☐ Multi Fan Remote (2-6) Fans
- ☐ Slave Remote
- ☐ NEMA 4X Remote Enclosure
- ☐ NEMA 4X VFD Enclosure
- ☐ iFan 4.3 (12 Fans Max/3 Groups Max) \*120V Power Required
  - ☐ Humidity/Temperature Sensor
  - ☐ BACnet TCP/IP
- ☐ iFan 7.0 (24 Fans Max/4 Groups Max) \*120V Power Required
  - ☐ BACnet TCP/IP
  - ☐ BACnet MSTP
  - ☐ Humidity/Temperature Sensor
- ☐ iFan 10.0 (30 Fans Max/4 Groups Max) \*120V Power Required
  - ☐ BACnet TCP/IP
  - ☐ BACnet MSTP
  - ☐ Humidity/Temperature Sensor
- ☐ BMS Interface Card
  - ☐ Modbus TCP/IP
  - ☐ BACnet TCP/IP
  - ☐ BACnet MSTP
  - ☐ Slave Remote

### Voltage

- ☐ 208 - 240V Single Phase
- ☐ 208 - 240V 3 Phase
- ☐ 460 - 480V 3 Phase
- ☐ 575V 3 Phase

### Fire Panel

- ☐ Standard
- ☐ Networked

### Mechanical Options

- ☐ Mounting Extensions \_\_\_\_\_ FT / M
- ☐ Extra Wide Beam Plate \_\_\_\_\_ inch wide beam
- ☐ Powder Coated Blades \_\_\_\_\_ RAL Color
- ☐ Powder Coated Frame & Mount \_\_\_\_\_ RAL Color
- ☐ Powder Coated Winglets \_\_\_\_\_ RAL Color
- ☐ Corrosion Resistant Package \*\*consult factory
- ☐ Black Anodized Blades ☐ Silver Anodized Blades
- ☐ Black Motor Covers ☐ Silver Motor Covers
- ☐ Laminated Wood Beam Brackets
- ☐ Truss Span Mounting Kit (consult factory)
- ☐ Z-Purlin Mounting Kit (consult factory)

| Fan Size    | Hanging Weight    | Normal Industrial Spacing | RPM |
|-------------|-------------------|---------------------------|-----|
| 8 FT 85NM   | 166 lbs. (75 kg)  | 55 feet                   | 198 |
| 10 FT 85NM  | 174 lbs. (79 kg)  | 60 feet                   | 154 |
| 12 FT 85NM  | 183 lbs. (83 kg)  | 65 feet                   | 125 |
| 14 FT 85NM  | 191 lbs. (86 kg)  | 70 feet                   | 106 |
| 16 FT 188NM | 216 lbs. (97 kg)  | 90 feet                   | 92  |
| 18 FT 188NM | 224 lbs. (101 kg) | 95 feet                   | 81  |
| 20 FT 188NM | 232 lbs. (105 kg) | 100 feet                  | 72  |
| 24 FT 188NM | 249 lbs. (112 kg) | 110 feet                  | 55  |

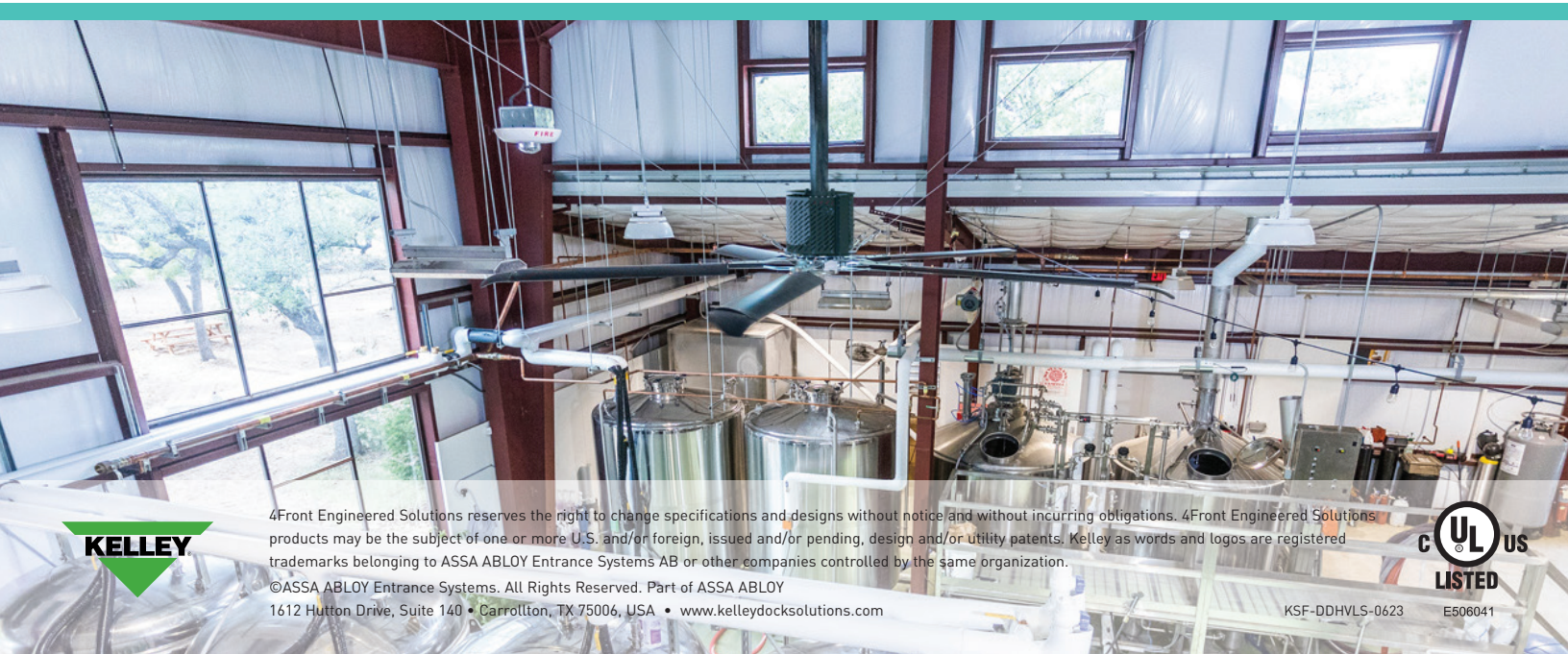
### Standard Colors



BLACK



SILVER



4Front Engineered Solutions reserves the right to change specifications and designs without notice and without incurring obligations. 4Front Engineered Solutions products may be the subject of one or more U.S. and/or foreign, issued and/or pending, design and/or utility patents. Kelley as words and logos are registered trademarks belonging to ASSA ABLOY Entrance Systems AB or other companies controlled by the same organization.  
©ASSA ABLOY Entrance Systems. All Rights Reserved. Part of ASSA ABLOY  
1612 Hutton Drive, Suite 140 • Carrollton, TX 75006, USA • [www.kelleydocksolutions.com](http://www.kelleydocksolutions.com)



KSF-DDHVL5-0623 E506041